

Nottingham  
Playhouse



LOTTERY FUNDED



Supported using public funding by  
**ARTS COUNCIL  
ENGLAND**

# Seven Years 2015 – 2022

## Seven Partners

We are determined to achieve a step change in the employment and artistic opportunities for disabled performers and creative teams; and a cultural change in the participating organisations to enable them to develop accessibility as a central part of their thinking and aesthetic.



# Creating a Learning Environment

- \*permission to fail with support to learn
- \*honest sharing of experience within the consortium



## **Change means.....**

- Embedding D/deaf and disabled people throughout our organisations
- Putting access and inclusion on the agenda of all our meetings
- Creating long term employment and training opportunities
- Making sure all staff have Disability Equality Training
- Making sure that all of our work becomes more accessible
- Growing audience development and marketing capacity



**FEBRUARY HALF TERM**  
**MON 18 - FRI 22 FEB 2019**



## FEBRUARY FAMILY FEST 2019

Monday 18 - Friday 22 February 2019  
Neville Studio - Tickets: £4 - £10 (see details below)  
For every paying child, one adult accompanies for free  
For ages 18 months and upwards

[BOOK TICKETS](#)



### DETAILS

### DATES & TIMES

Come and shake off winter this February half term and join us for a fun-filled week of family activities here at Nottingham Playhouse. We have something for all ages and abilities, and will be running free activities in our Ustinov room, which will be transformed into a space to draw, play and create.

#### GARDEN EXPLORERS PMLD WORKSHOP

Mon 18 Feb, 11.00am – 12:30pm & 2.30 – 4.00pm (for ages 5 – 12yrs)

With spring just around the corner, come and help us to create a garden of sensory fabrics and materials all ready for planting and growing. Designed for families with children with profound and multiple learning disabilities. Come to the morning or afternoon session. Book by calling Box Office on 0115 941 9419

Price: £6



#### PLAY IN A DAY – BSL INTERPRETED

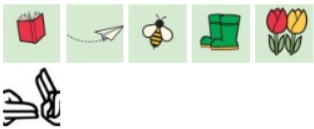


Tue 19 Feb, 10.00am – 4.00pm with 1 hour for lunch (for ages 12 – 16yrs)

Working with our in-house practitioners, come and take a play from page to stage across the course of a day. No previous experience required.

Price: £10

### GALLERY



### YOU MIGHT ALSO LIKE ...



#### GARDEN EXPLORERS PMLD WORKSHOP

Mon 18 Feb  
Neville Studio, 11am



#### PLAY IN A DAY - BSL INTERPRETED

Tue 19 Feb  
Neville Studio, 10am



#### BUZZY BEES DRAMA GAMES

Wed 20 Feb  
Neville Studio, 10:30am









NOTTINGHAM  
PLAYHOUSE THEATRE  
COMPANY PRESENTS

# THE ELVES AND THE SHOEMAKER

ADAPTED BY KATHERINE CHANDLER  
DIRECTED BY JOANNA CHANCE-BROOKWILL

## VISUAL STORY



Nottingham  
Playhouse

We are looking forward to seeing you when you visit us at Nottingham Playhouse. When you are here you are going to see a play called The Elves and the Shoemaker. The story is about a poor and lonely shoemaker called Clara who receives some much needed help and kindness from two elves. The play will last about 1 hour.

When you walk into the performance space the lights will be on. There will be cushions on the floor and chairs to sit on. At the start you will meet the actors in their costumes and our stage manager.

Here is who you will meet:



**TERRY**

Terry is an actor and will be playing the parts of the Storyteller and Elf. Terry will also be playing the different customers who visit Clara's shop. Terry will play these instruments:



Melodeon



Glockenspiel



Cajon



**HAZEL**

Hazel is an actor and will be playing the parts of Clara the Shoemaker and Elfy. Hazel will play these instruments:



Guitar



Ukulele



**WILHELM**

Wilhelm was Clara's best friend. Clara misses Wilhelm so always keeps a photo of him close by. Clara talks to Wilhelm when she feels lonely.



**LOUISE**

Louise is the Stage Manager and works the lights and sound.

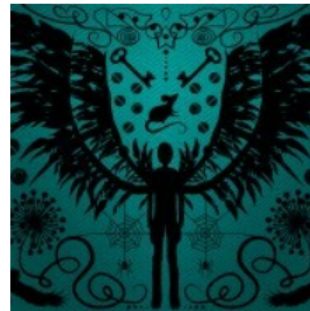
## THE STORY

1. The Storyteller introduces Clara the Shoemaker. Clara is poor and lonely as nobody wants to buy the shoes she makes. To keep herself company Clara talks to a photo of her old friend Wilhelm.
2. Clara starts to make a pair of shoes from her last piece of leather, but is very tired so decides to finish them in the morning.
3. The Storyteller tells us about the sounds of the wind and rain from a storm that happens in the night while Clara is asleep.
4. The Elves realise that the Shoemaker has no food or fuel for her fire. They decide to help Clara by finishing the shoes she was making. The Elves disappear before Clara wakes up.
5. Clara finds the super-duper shoes that the Elves have made. A customer buys the shoes and Clara has enough money to buy food and enough leather to make two pairs of shoes.
6. As before, Clara goes to sleep. The Elves appear and finish off the two pairs of shoes that Clara is making and they disappear before Clara wakes up.
7. Clara finds the two super-duper pairs of shoes. A customer buys the shoes and Clara has enough money to buy more food and four pieces of leather. Clara starts to make the four pairs of shoes.
8. This time Clara does not go to sleep. Instead Clara hides to find out who is finishing the shoes.
9. Clara realised the Elves finished the four pairs of shoes and decides to repay their kindness by making them a present - some new clothes.
10. Clara works very hard all day to finish making the clothes before the Elves return. Clara hides again.
11. The Elves are very delighted to find their new clothes. They leave Clara's shop very happy indeed.
12. Clara is happy and is now the best shoemaker in the land.



## THE DH ENSEMBLE

(The Deaf & Hearing Ensemble)



### SKELLIG: RELAXED PERFORMANCE

Thursday 4 April, 1:30pm



**Family Friendly:** A relaxed performance of Skellig

[BOOK NOW](#)

### SKELLIG: RELAXED PERFORMANCE

Thursday 4 April, 1:30pm

Main House - Tickets: £30.50 - £8.50

Age recommendation 8+

[BOOK TICKETS](#)



DETAILS

DATES & TIMES

#### WHAT IS A RELAXED PERFORMANCE?

We offer performances that are more relaxed for all those who benefit from a show where loud noises are reduced, elements of surprise are kept to a minimum and moving around the auditorium is not a problem.

**Nottingham  
Playhouse**



**LOTTERY FUNDED**



Supported using public funding by

**ARTS COUNCIL  
ENGLAND**